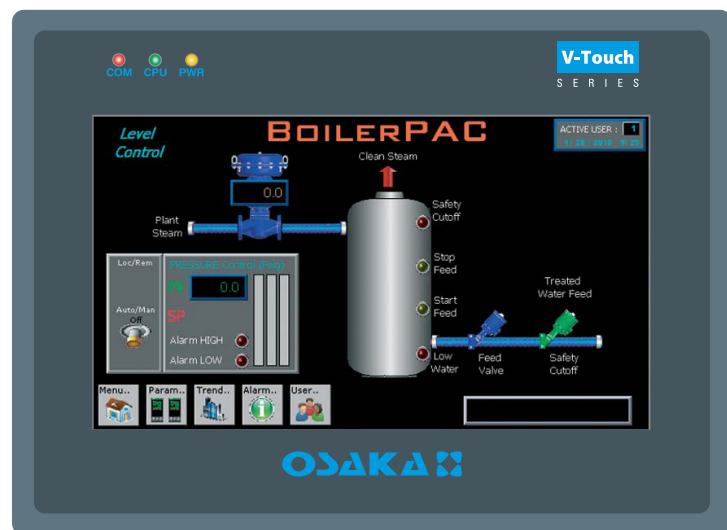


V-Touch

S E R I E S

Industrial Operator Panel with 7.0" wide screen colour graphic display **V-Touch 7** model

- 7.0" color graphic display
- 65536 color TFT LCD display
- Fan-less cooling system
- 32 Bit 400 MHz RISC processor
- Built in Real Time Clock (RTC)
- LED backlight
- WVGA (800 x 480 pixels) resolution
- 4 wire analog resistive touch screen
- Connection to industrial bus systems (more than 100 drivers)
- 64 MB DRAM user memory, 256 MB flash memory on board
- NEMA4 / IP65 front panel protection
- Programmable with Easy Builder 8000 software
- Display data in alphanumeric and graphic formats
- Dynamic graphic objects (bargraphs, gauges, XY plot, etc..)
- Data acquisition and trend presentation
- Recipes management and storage
- Alarms and historical alarm list
- Up to 12 levels of password protection
- 1 USB 1.1 host port and 1 USB 2.0 client port
- Ethernet port (10/100 baseT)
- SD card slot
- CE / RoHS certifications



Osaka Solutions, SL

C/ Lluís Sagnier, 46 | 08032 Barcelona (Spain)
Tel. (+34) 93 435 14 95 | Fax. (+34) 93 436 59 12
E-mail: comercial@osakasolutions.com

OSAKA
WWW.OSAKASOLUTIONS.COM

Technical data

Display

Type	65536 color TFT
Graphic resolution	Wide VGA, 800 x 480 pixels
Active display area	7.0" diagonal
Pixel pitch (H x V)	0.1905 x 0.06305
Viewing angle (T / B / R / L)	70 / 50 / 70 / 70
Backlight	LED
Brightness	300 cd/m ²
Contrast ratio	500 : 1
Backlight life time	30000 hours

Memory

User memory	64 MB on board
Storage memory	256 MB Flash on board
Memory expansion	1 SD™ card slot

Interfaces

Com1 port	RS232/RS485, 2 or 4 wires
Com2 port	RS232
Com3 port	RS232/RS485, 2 wires
Ethernet port	10/100 Base-T
USB1 port	1 USB 1.1 Host port
USB2 port	1 USB 2.0 High Speed Device

Functionality

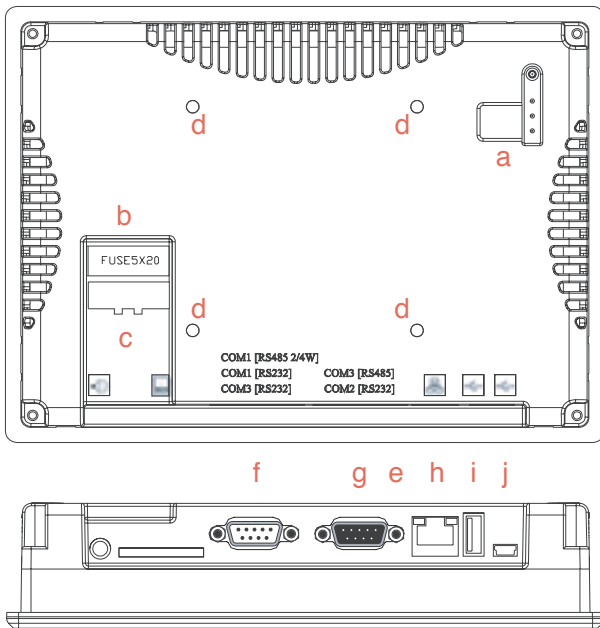
Data acquisition and trends	Standard
Recipe memory	128 kB x 2
Alarms	65536
Event list	65536
Password	Standard, 12 levels
Hardware RTC	Standard, battery backed-up
Screen saver	Standard
Buzzer	Standard (audible feedback for touch screen)
Power supply voltage	24 Vdc ±20% (polarity sensitive)
Max. power consumption	~ 250 mA
Fuse	1.25 A
Weight	~ 0.85 kg (~ 1.87 lb)
Operating temperature	0...+45 °C (32...113°F)
Operating and storage humidity	10...90 % RH non-condensing
Protection class	NEMA4 / IP65 (front panel)

Product designed for installation in an industrial environment in compliance with the following regulations:

EMI:	FCC class A
CE:	EN50081-2, EN50082-2

Connections/Dimensions

Connections



- | | |
|----------------------------------|---------------------------------|
| a. DIP Switches and Reset button | f. Com1 [RS-232], Com2 [RS-232] |
| b. Fuse | g. Com1 [RS-485 4/2w] |
| c. Power terminals | Com3 [RS-232/RS-485] |
| d. VESA 75mm screw holes | h. Ethernet port 10/100T |
| e. Secure Digital (SD)™ slot | i. USB host |
| | j. USB client high speed |

Cutout and front view

Panel dimensions L x H	200.35 x 146.35 mm	7.888 x 5.762"
Cutout A x B	192 x 138 mm	7.559 x 5.433"
Depth (type - 0045)	42.55 mm	1.675"
Max. panel thickness	7 mm	0.3"

